

Highland East Nordic Ski Trails

Thanks to Bozeman Deaconess Hospital, 7.5 kilometers of new Nordic ski trails are now open to the public in the Hospital-owned fields east of Highland Boulevard, between Ellis Street and Kagy Boulevard. The new trails were cleared and mowed by Bridger Ski Foundation (BSF), with help from Gallatin Valley Land Trust (GVLT) and Gallatin County Conservation & Parks. BSF will be grooming the trails throughout the winter and the Bozeman Parks Division will be plowing the parking area. Bozeman Deaconess is granting use of their land on an annual basis. In coming years much of this land will be developed and the ski trails will be reconfigured. The development plans include extensive open space and parkland with permanent ski trails and dry season trails.

Parking & Street Crossings

To access the new trails, use the softball fields parking lot with the recycling bins at the northeast corner of the Highland/Ellis intersection.

Please do not park at the hospital or the surgery center.

Please use extreme caution if you cross Highland on foot, especially with children.

Start skiing at the southeast corner of the Highland/Ellis intersection.

BSF is providing a porta-potty in the softball fields parking lot.



Ski With Caution

Beware of uneven surfaces especially in flat light. Plant stems may also protrude from the trails in some locations.

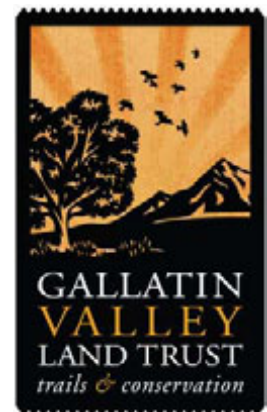
Stay right and watch for other skiers at intersections.

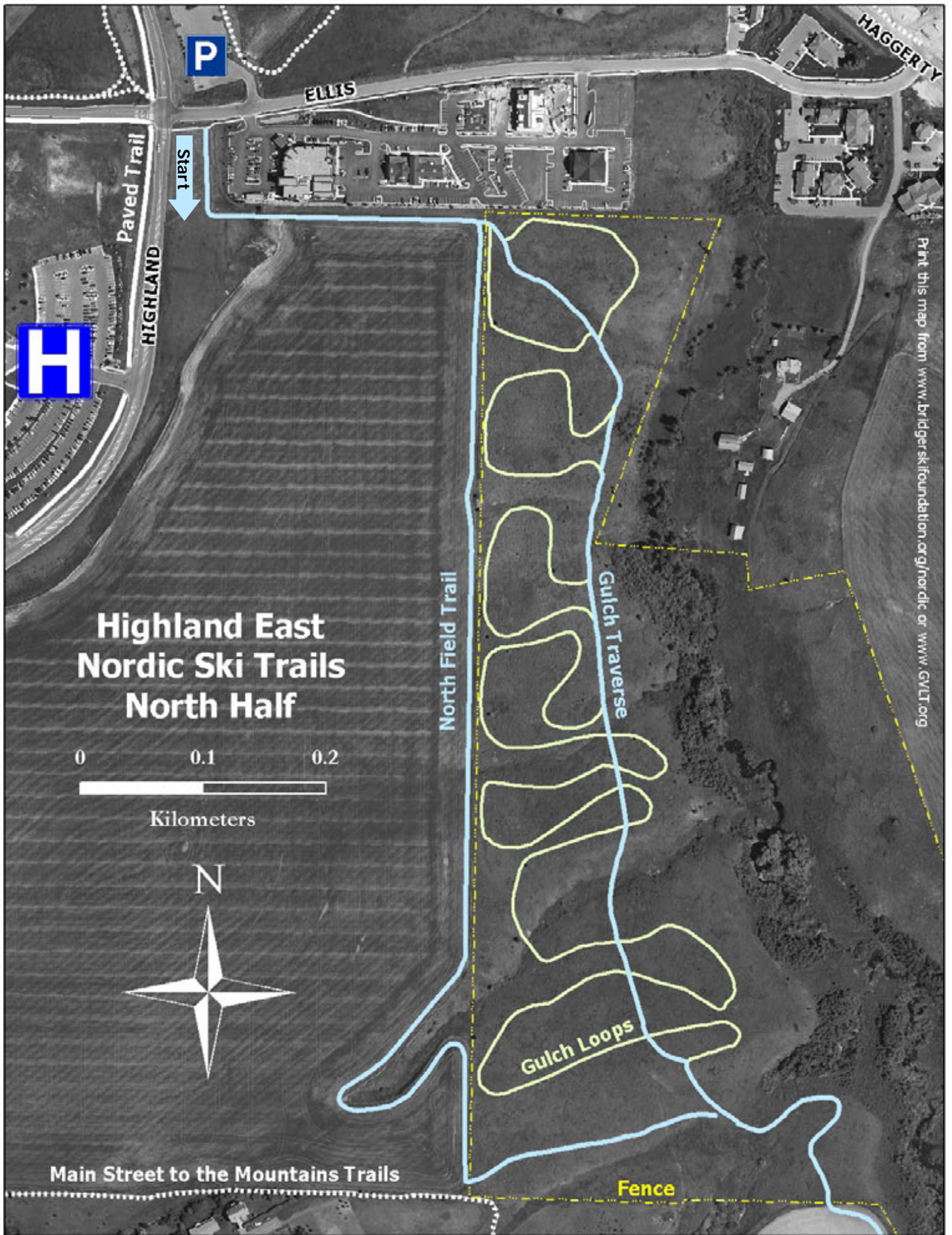
BSF may install directional signs on some of the loop trails. Please comply with all one-way signs.

Remember these are NEW trails. During this first season we will be identifying any problems so that we can improve the trails over the coming years. If you encounter problems or have suggestions for trail improvements please let us know!



Bozeman Deaconess
HOSPITAL





Highland East Nordic Ski Trails South Half

0 0.05 0.1



Kilometers



South Field Trail

Steep Hill →

Kagy Loops

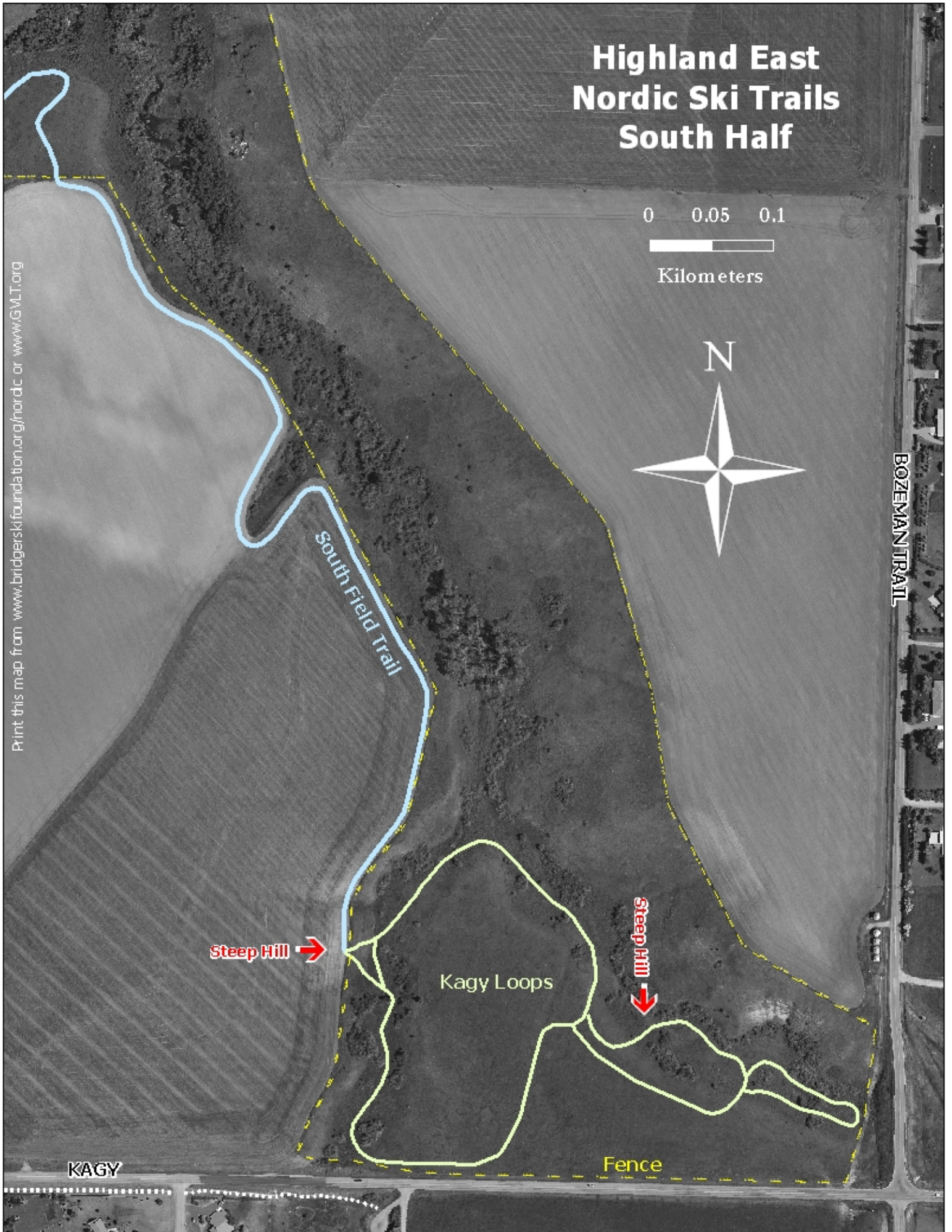
Steep Hill ↓

KAGY

Fence

BOZEMAN TRAIL

Print this map from www.bridgerskifoundation.org/nordic or www.GVL.T.org





North Field Trail (1.5 Kilometers):	Moderate grades, sharp turns at the south end, two-way traffic
South Field Trail (0.9 Kilometers):	Moderate grades, no sharp turns, two-way traffic
Gulch Traverse Trail (1.0 Kilometers):	Rolling terrain, two steep hills and sharp turns at the south end, two-way traffic
Gulch Loop Trails (2.7 Kilometers):	Hilly and often steep terrain, some sharp turns, some loops may be signed one-way
Kagy Loop Trails (1.4 Kilometers):	Rolling terrain with two steep hills and sharp turns, some loops may be signed one-way

BSF Community Nordic Trail Passes

Purchase your trail pass at:

BSF Website ~ Bangtail ~ Northern Lights ~ REI
Your trail pass purchase is tax deductible!

Bozeman's groomed Nordic trail system is made possible by Bridger Ski Foundation and its partnership with MT Fish Wildlife & Parks, GVLT, Gallatin National Forest, and the Bozeman Parks & Recreation Department.

In addition to the new Highland East trails, BSF currently maintains and grooms four other areas: Bridger Creek Golf Course, Lindley Center (Highland West), Sourdough Canyon/Bozeman Creek, and Hyalite Canyon

By purchasing a BSF Community Nordic Trail Pass you support frequent trail grooming, continued trail system improvements and grooming equipment maintenance. 100% of all trail pass purchases go directly to BSF's trail grooming fund.

Make Tracks for Trails

Ski to Support Community Trails at Bohart Ranch Cross County Ski Center

Saturday ~ February 26th

Fun for all ages and abilities

Compete or just enjoy the great skiing

Refreshments all day

Skate and classic clinics

Kids activities

Great prizes for top fundraisers

Raffle prizes

Golden Ski competition

After ski party

**For More Information
 Contact GVLT**

Bridger Ski Foundation Nordic Programs
PO Box 1243
Bozeman, MT 59771
(406) 587-8404 ~ bsf_nordic@yahoo.com
www.bridgerskifoundation.org.nordic

Gallatin Valley Land Trust
25 N. Willson Ave., Ste. E
Bozeman, MT 59715
(406) 587-8404 ~ info@gvlt.org
www.GVLT.org